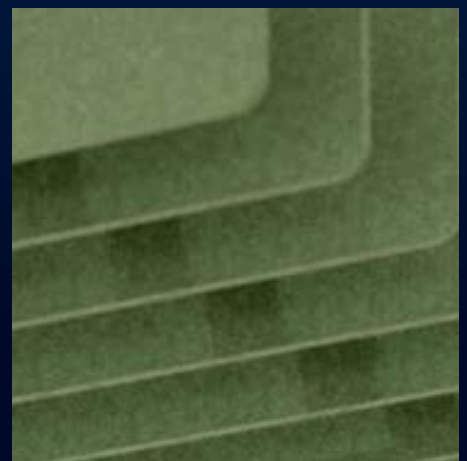


Ceiling Baffle – Grid Assembly & Installation Instructions

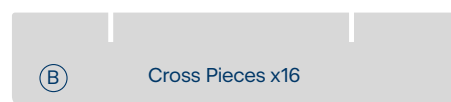
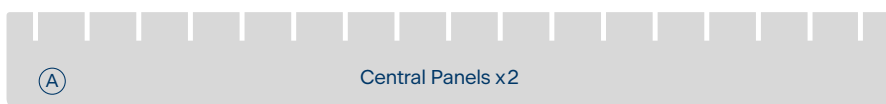


Hanging acoustic solutions add a design element to any space. The Ceiling Baffle design controls echo, and creates a stylish feature.

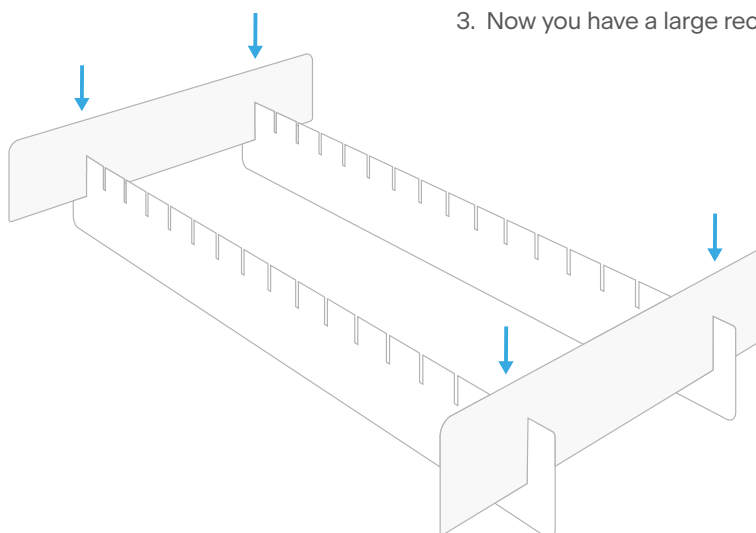
Designed using sound absorbing PET acoustic material, these acoustic solutions reduce noise and absorb sound.



Ceiling Baffle – Grid Assembly Instructions

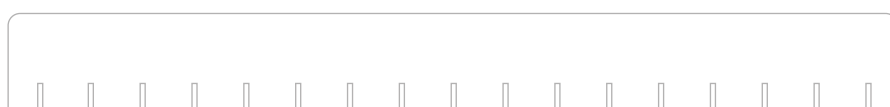


1. Lay the two longest pieces (2400mm long) out on the floor. These are the central panels (A).
2. Take one of the cross pieces (B) (1200mm long) and using the cut out slot holders insert the cross pieces into the end of both of the long central panels (A).
3. Now you have a large rectangle.



4. Repeat the installation of the remaining cross pieces (B) until your baffle is complete.

5. Using a helper, turn the baffle over so you can access the long central panels (A). These central panels (A) are where you need to attach the ceiling fixings.



The central panel slats must be pointed downward on the assembled baffle to attach the ceiling fixings.

Ceiling Baffle – Grid Installation Instructions



Your Ceiling Baffle – Grid includes an HPHANG Hanging Kit. Attach parts as shown below.



To install on the ceiling:

1. Measure in 600mm from the edge of the central panel.
2. Drill a small hole in the long central panel to allow the grub screw to screw through the panel. Repeat on the other end of the central panel. Repeat on the second central panel so you have all four fixings in place. Insert the wire into (A).



3. Measure the distance between each of the fixings (A) and screw the ceiling mounts (B) into the ceiling at the same dimensions. Ensure the fixing is adequate to hold the weight of the baffle, using wall plugs if required.

4. Using two people lift the baffle and feed the wire through (B) and out through the gap in the side of the ceiling mount.

5. Pull the wire through to the approximate length you need and adjust the length of the wires to ensure the baffle sits level. Cut the wire to length.

Option to fix Ceiling Baffle to ceiling tiles:

If you have ordered CEILINGGFFIX Ceiling Grid Fixing Kit simply twist the white fixings on to the ceiling grid and screw the mount on. Now feed the wire through the ceiling mount, to the approximate length you need and adjust the length of the wires to ensure the panel sits level. Cut the wire to length.

