

teknic

versatility and value

commercial upholstery

display panels

pinboards

INTERIOR FIT OUT FABRIC

teknic

teknic

Multi-purpose fabric, engineered to meet the demanding requirements of the upholstery, exhibit, display and pinboard markets.

Manufactured under patented Muréna® technology, the unique construction is inherently durable, does not fray and offers a pinnable Velcro® compatible fabric.

BodyGuard™ soil release treatment is integrated into the textile to ensure easy care.

Green Star – this fabric contributes towards satisfying Credits IEQ 11, MAT 1 and MAT 3 – Green Star® rating tool Office Interiors v1.1 and Credit IEQ 8 – Green Star® rating tool Education v1.

TVOCs – Teknic is a low VOC emitting fabric. Test report available.

Full details on Environmental Testing available on our website www.rimfabrics.com.au

INTERIOR FIT OUT FABRIC

Specifications

Product	Teknic		
Composition	100% Polyester		
Weight	330 gsm		
Roll Width	140 cm (nominal)		
Roll Length	50 metres (nominal)		
Availability	All colours in stock for immediate delivery. Special widths and colours available on a project basis.		
Certification	Manufactured to ISO 9001 International Quality Standard ISO 14001 International Environmental Standard		
Abrasion Resistance	Martindale Endpoint 29,000 cycles Class 4 – Commercial Medium Duty		
Flammability	AS 1530 Pt.3 1999		
	Ignitability Index	10	Range 0 – 20
	Spread of Flame Index	0	Range 0 – 10
	Heat Evolved Index	2	Range 0 – 10
	Smoke Developed Index	4	Range 0 – 10



BodyGuard™

rim
FABRICS
design • technology • sustainability

A Division of
innova
PERFORMANCE ENGINEERED TEXTILES

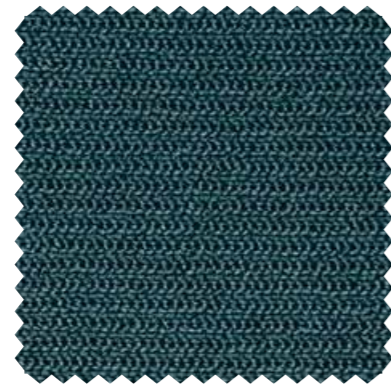
rim
innova

innova
PERFORMANCE ENGINEERED TEXTILES

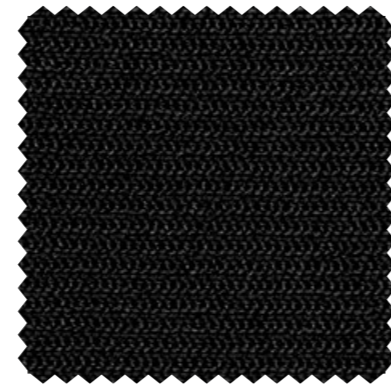
head office 36-40 Sunmore Close HEATHERTON VIC 3202 AUSTRALIA
phone + 61 3 9551 8722 fax + 61 3 9551 8744 email rim@innova-rim.com.au website innova-rim.com.au



Navy 802



Pine 805



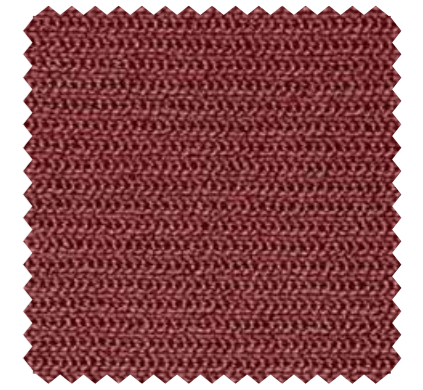
Domino 809



Toffee 814



Orange 810



Redwood 818



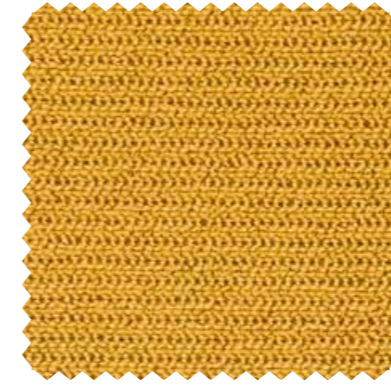
Marine 803



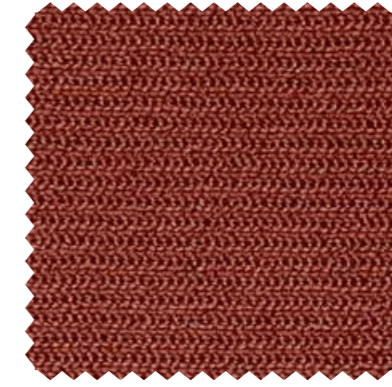
Kingfisher 804



Grape 820



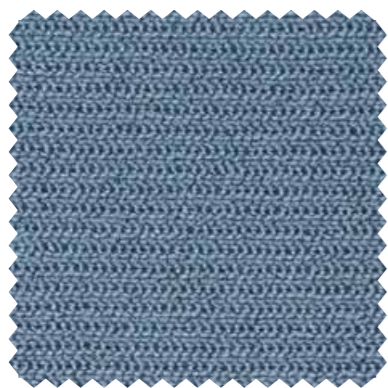
Mustard 811



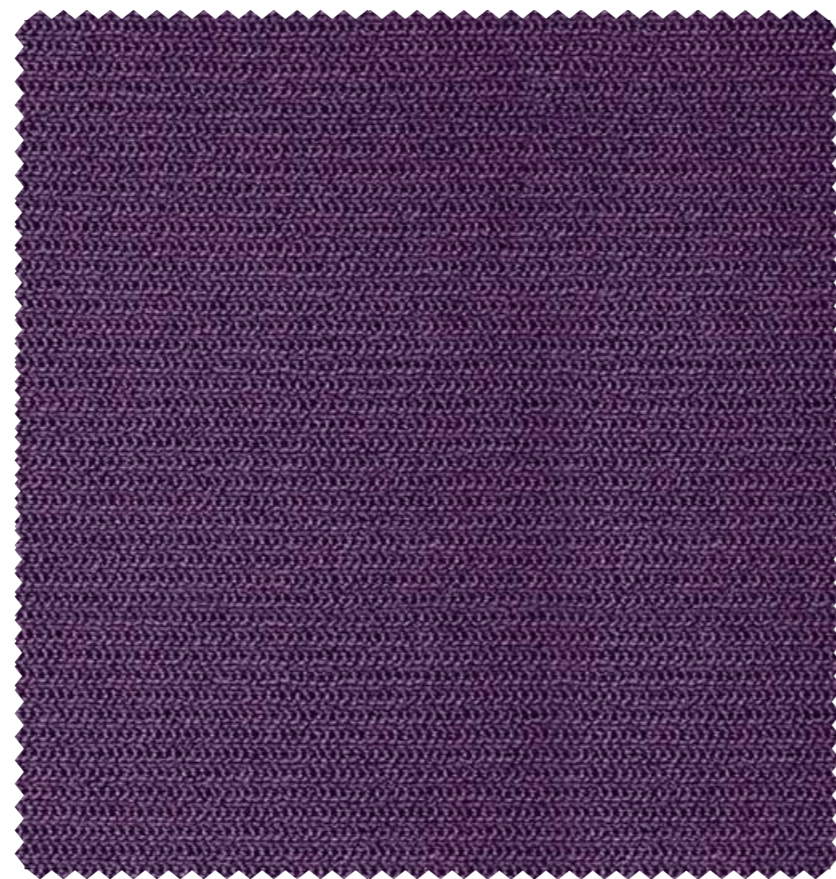
Clay 817



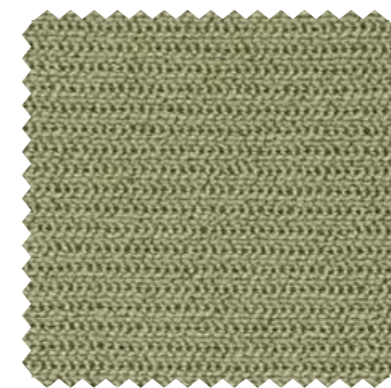
Poppy 816



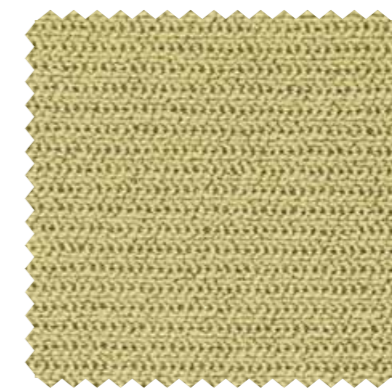
Stream 801



Purple 819



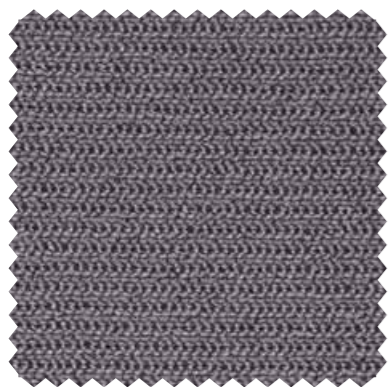
Kiwi 812



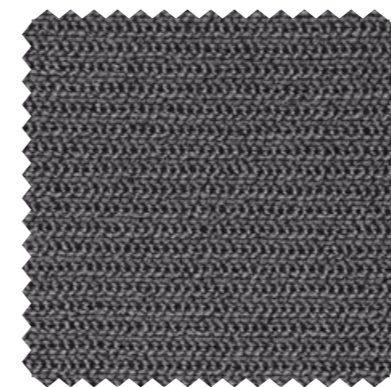
Lettuce 813



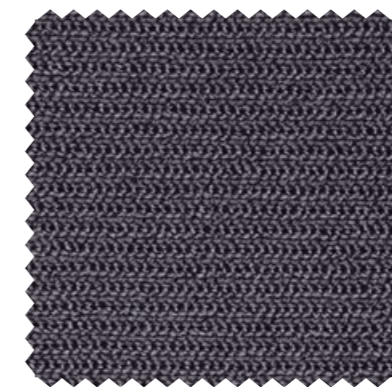
Ruby 815



Sable 806



Mink 807



Goanna 808